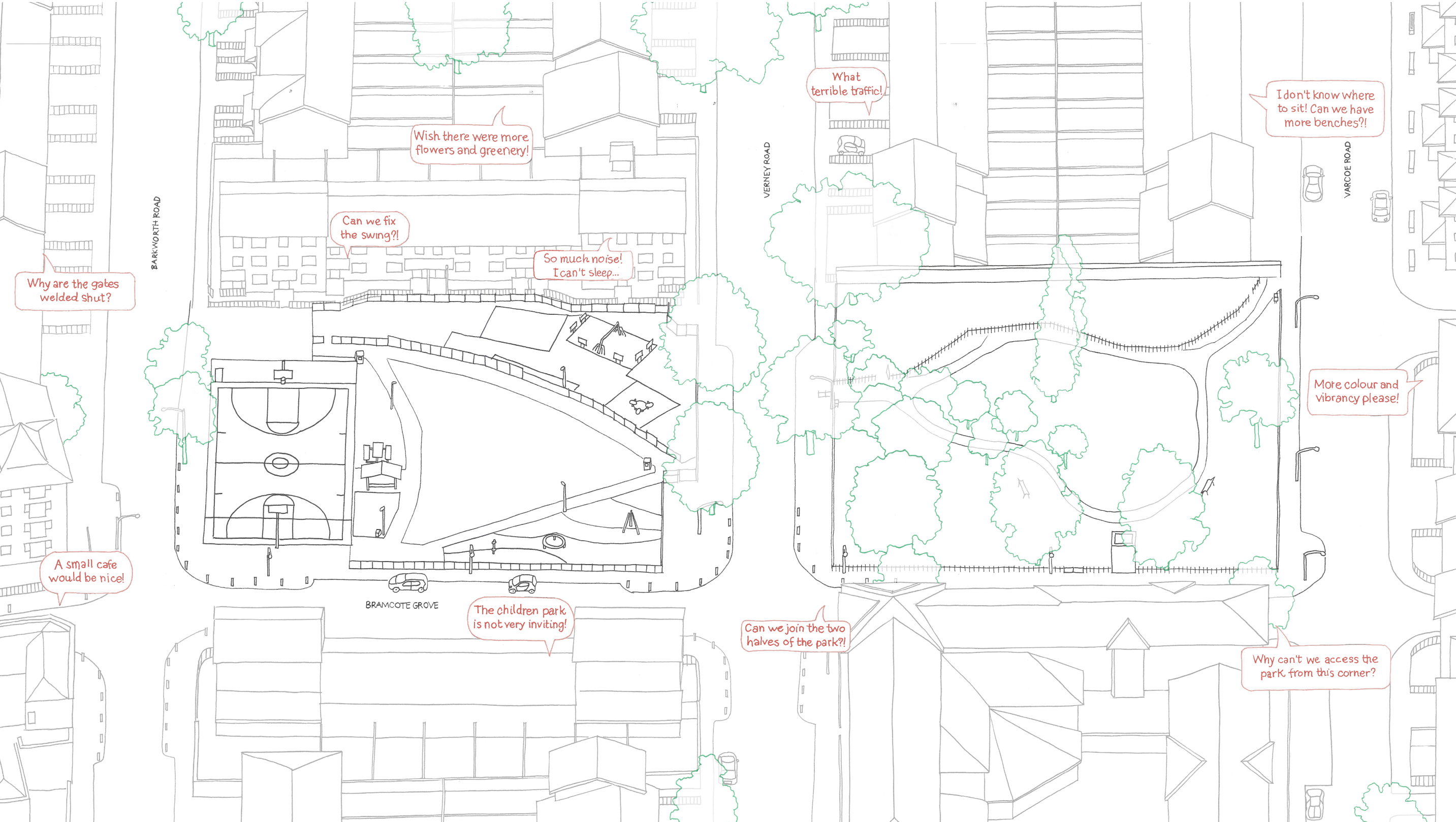


Bramcote Park

One park with two halves

Sanchez Benton architects with
Nigel Dunnett and Gabriel Kuri



The above drawing is our first attempt at compiling resident feedback on a single drawing. It will continuously evolve and develop as the consultation process develops. It will be available resource for everyone in the community to refer back to.



Existing view at the crossing of Barkworth road with Bramcote Grove.



Existing view along Verney road. The two parks appear to turn their back on each other.



View at the junction between both parks, fences and parked cars block the connections across both halves.

Sanchez Benton, Nigel Dunnett & Gabriel Kuri

Our team builds on our successful collaboration on the redesign of Peveril Gardens and Studios, a 1960's semi derelict podium garden and garages on the edge of the Bricklayers Arms roundabout, transformed into a public walled garden and artist studios.

The project was recently awarded Best Landscape and Public Realm Project at the AJ Architecture Awards and also received the Editor's Choice Award for Project of the Year. The judges commented:

"The project demonstrates the potential for a light-touch, low-cost approach to transform neglected city space into thriving and nurturing public realm. It's generous, joyous architecture with a strong identity – and shows off the compelling and creative possibilities of reuse." And "judges praised this project as 'a jewel-like oasis' and an 'impressive combination of community benefit and quality of architecture: creating a big impact on a small scale – and budget.'"

Sanchez Benton Architects are a London based architecture studio established in 2017, whose work focuses on public projects that improve the city and the everyday life of users and passers by.

Their approach is both pragmatic and philosophical. They work collaboratively and enjoy a process that values ongoing conversations with clients, colleagues, consultants, and all end users of the architecture and landscape.

With every project, the team sets out to understand the cultural setting of the work before developing an appropriate response. It is a method that celebrates and respects the latent beauty and merit in what is present, what has been, and what could come next. They enjoy the practical and poetic potential in the way buildings are made and engage fully in each step towards the realisation of the designs. The practice looks at architecture as a frame for life at all its levels; they believe it should act wisely and with humour and kindness.

Nigel Dunnett is Professor of Planting Design and Urban Horticulture in the Department of Landscape at the University of Sheffield and is one of the world's leading voices on innovative approaches to planting design. He is a plantsman, designer and pioneer of the new ecological approach to planting gardens and public spaces and regularly collaborates with a wide range of other professions.

Nigel's projects include The Queen Elizabeth London Olympic Park; The Barbican Centre, London; Sheffield Grey to Green and Peveril Gardens, London.

A primary objective of Nigel's work has been to move the consideration of planting design and landscape horticulture from a largely cosmetic,

decorative, and functional role, to one that is also central to the discussion of how to address the major problems of climate change and a sustainable future.

Gabriel Kuri's sculptures bridge fabricated and found objects, his installations address themes of systemisation, consumption, and the porous border between functionality and formal allure. Alternating between floor-based sculptures and wall works, Kuri's practice displays the complex relationships between the innate material properties of things – their sheen, softness, weight or colour – and their 'real world' meanings, establishing an uncertain interplay between the abstract or symbolic potential of his materials and their everyday origins and uses, often raising questions concerned with broader socio-cultural systems of hierarchy and value-construction.

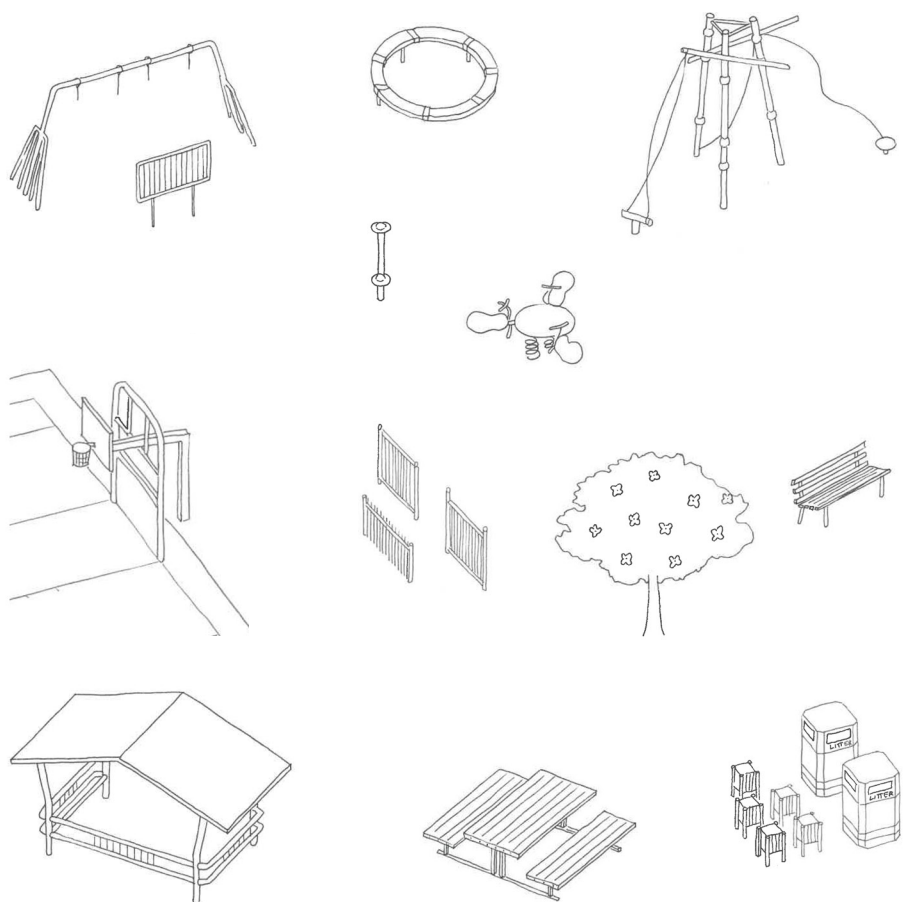
Public Consultation Embedded in the Process. Not an add on

We pride ourselves on a design approach that puts consultation, engagement, and collaboration at the heart of the development of the project, from concept to completion. We will work with residents, Southwark Council and all other stakeholders to tailor the design for the revival of Bramcote Park. We have considerable experience preparing presentation material for several public community orientated projects and have refined ways of communicating architectural ideas that encourages engagement and inspires conversation. We have found that playful large-scale models coupled with clear graphic illustrations of proposal within its context invite curiosity and can be understood by all.

We will approach the design process in the following way to maximise the impact of community consultation, focusing on dialogue around the development of a public asset:

- We will work with existing community groups and their events. We believe you get far more interaction if you bring a proposal to an already popular and regular event, than if you try to establish your own event without an established user group. This also creates the opportunity for repeat feedback and interaction. This may include local resident's associations, youth clubs and Ilderton Primary School.
- We will plan the consultation strategy so that it covers a wide spectrum of the local community. At an early stage we can assist in planning a strategy that communicates with different groups, including key consultation events.
- We will ensure that early-stage design options are clear about the feedback requirements from the community. We find it helps to frame clear objective questions (e.g. 'What is preferable in each options? A, B or C?'). In general, we try to keep the conversations constructive and directional.

Our initial concept proposal is based on the survey information available at the time of the competition and is by no means a fixed design. It will form a starting point for the consultation helping everyone to understand what works, and what is not so successful and could be improved.



We will start by assessing what's already on site, understanding its value and its potential for reuse

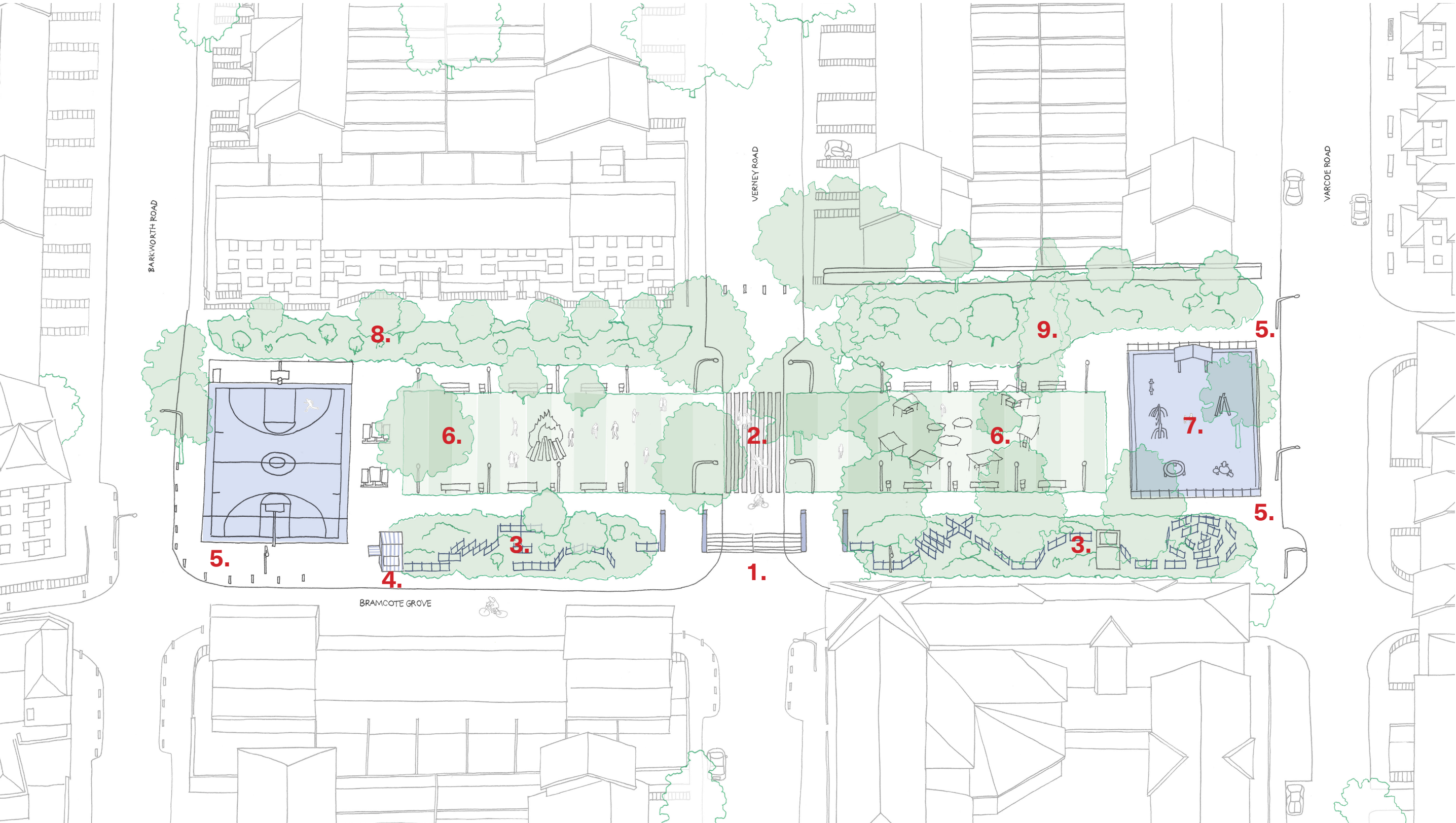
Please scan this QR code to submit feedback on the proposed competition entry



Bramcote Park

Sanchez Benton architects with
Nigel Dunnett and Gabriel Kuri

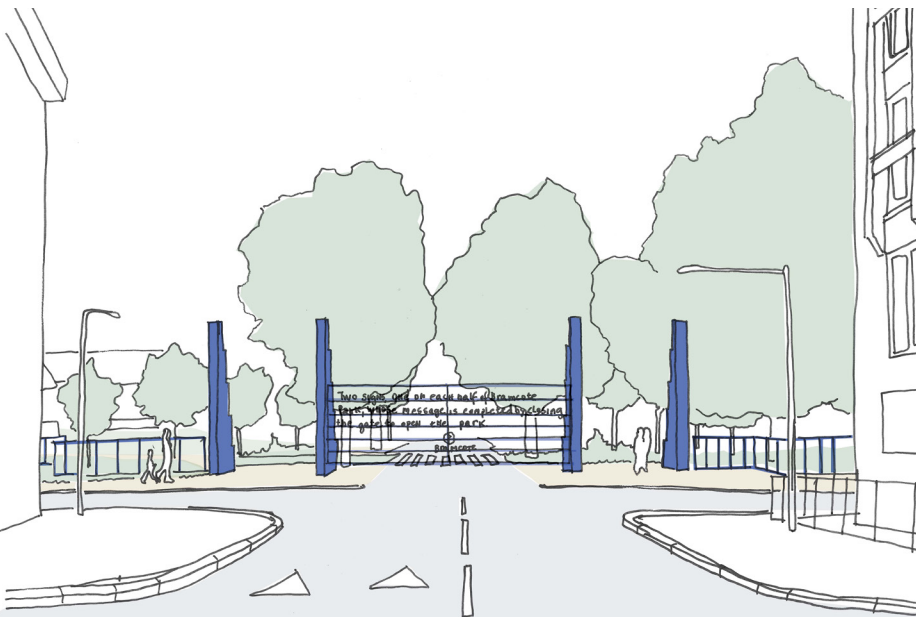
One park with two halves



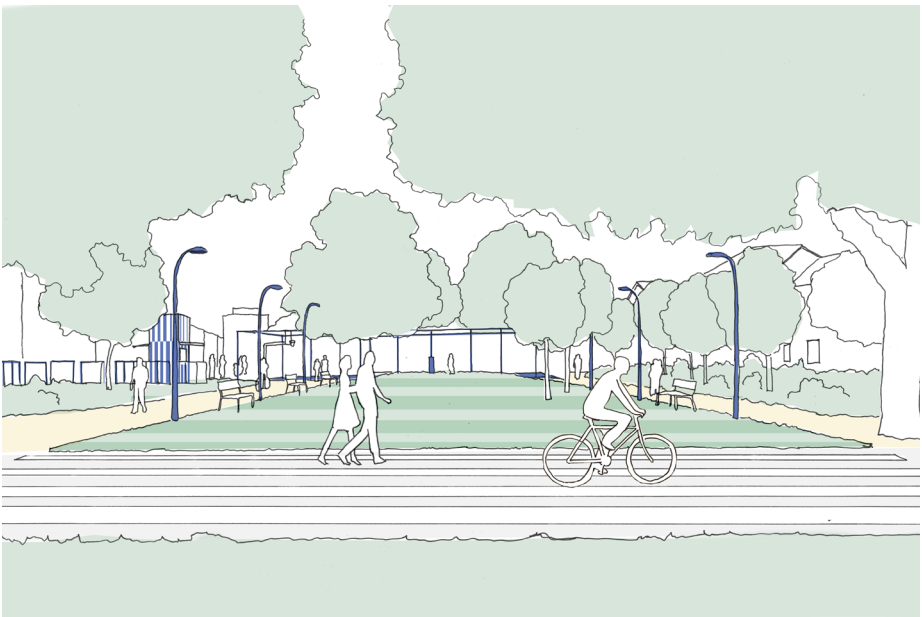
Planometric drawing of the proposed improvements to the park



Proposed view at the crossing of Barkworth road with Bramcote Groove with new kiosk marking the entrance to the park.



Proposed view along Verney road. The two gates come together for special occasions.



Proposed view at the junction between both parks. Improved permeability and connections. A new centre for the park.

A clear idea with a strong environmental approach

Our proposal aims to highlight Bramcote Park's uniqueness, the fact that it's made up of two halves, but also to bring them together with a new centre at their interface. The two halves will share common ground and mirror elements across from one another. We propose the following alterations to create a new identity for the park:

1. Introduction of two new symbolic gates at the crossing of Bramcote Grove and Verney road, giving the park a clear address. These works will become an art piece by artist Gabriel Kuri who will develop a message with the local community to install across the pair of gates. On special occasions these gates will be fully open 180 degrees and close Verney road to traffic, making sense of the park as one whole. This may be one day every weekend or just on important days for local community celebrations. The message on the gates will become readable when the two gates become one.
2. Eliminating fences along Verney road, encouraging permeability through the introduction of a village green split in two halves and connected by a wide zebra crossing.
3. The reimagining of the old fences into a new fragmented risky play fence for older children along the Bramcote Grove edge of the park.
4. A new park kiosk in the northern half mirroring the volume of the existing electricity substation in the southern half of the park.
5. The introduction of new routes through the park that provide cut through routes and encourage pedestrian use.
6. New lighting and seating around the village green.
7. A new contained playground in the southern half mirroring the footprint of the sports cage in the northern half. All existing playground equipment will be refurbished and reused.
8. A new planted bed buffering splendour walk from noise and anti-social behaviour.
9. A new low maintenance, year round interest planting scheme that builds upon the existing biodiversity of the park and adds to it.

Our proposal imagines Bramcote Park and its everchanging surroundings as repositories of raw materials and resources. Our proposal is about the re-use of these materials, using what is already there and tapping into the demolition material arising from building sites along the Old Kent Road. This locally sourced building fabric will be spared from becoming waste, contributing to the net zero carbon approach, and will also offer opportunities for participation that allow for community, industry and local makers to

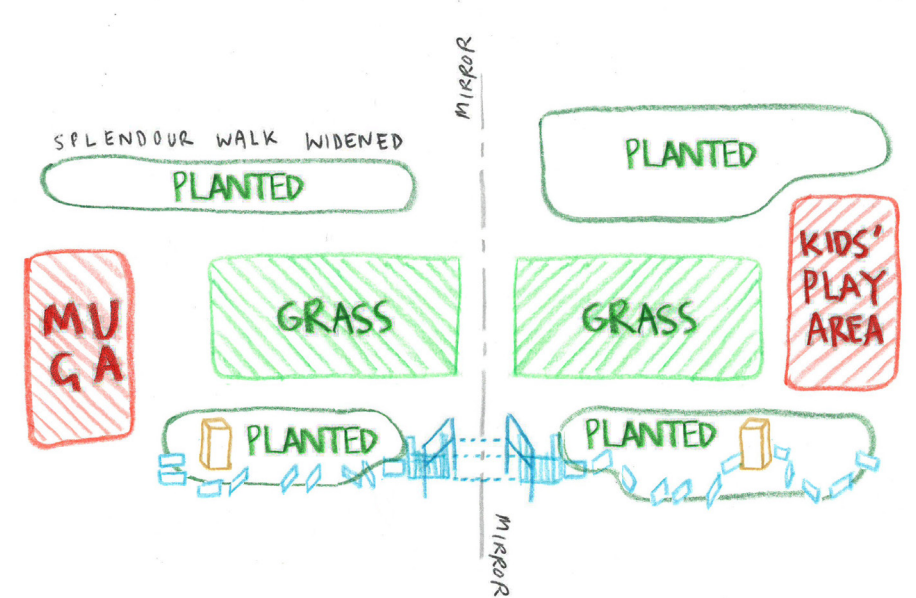


Diagram showing the principle of mirroring elements across both halves of the park, and creating a new village green that visually crosses Verney Road providing a notional centre to the park.

contribute. The reuse of demolition material hints at the history of the site when the whole neighbourhood was flattened to the ground and rebuilt. Re-use not only saves on carbon, energy and waste, but it creates continuity of meaning between existing neighbourhoods and the new project, developing its story and engaging people in the construction of their public park.

Sustainability and Environmental approach

The proposal is sustainable on a number of levels:

- A. The architectural approach focuses on reuse and working with the found material already on site. The scheme rearranges elements, giving them a new order and surprising relationships.
- B. Where new elements are required, such as additional park seating and the pillars for the new gates, we are proposing to reuse rubble from

nearby sites that are being developed along the Old Kent Road, which will be carefully graded and consolidated with a cement-free binder.

C. The scheme will support a number of plant species promoting and celebrating the natural world and biodiversity in an urban centre. The planting will be truly multi-functional, creating year-round visual interest and beauty, as well as significant wildlife and biodiversity value. Above-all, it will be low-maintenance and sustainable in character, creating a 'low-input, high-impact' planted landscape.

D. Any new elements of hard surface will be permeable and incorporated into a holistic SuDS strategy, alleviating any potential additional surcharges onto the existing sewer system. These measures will ensure climate resilience and future proofing of the design.

Fabrication, longevity, robustness and maintenance

The architectural approach adopted focuses on longevity and robustness to try and reduce maintenance requirements to a minimum. Starting from the planting selection, the approach is central to the discussion of how to address the major problems of climate change and a sustainable future.

Play structures and fences will be reused and refurbished where possible. New elements will be fabricated out of robust materials that are through colour wherever possible to enable patina and wear and tear to age gracefully.

The fabrication of the distinct elements that form the proposal offers opportunities for participation that allow for community, industry and local makers to contribute. We are aware of the large number of fabricators and material stores located just south of the site, but also elsewhere in this part of the borough, and we will explore opportunities for collaboration in the fabrication and adjustment of the elements. We will strive to make the project a true "Made in Bermondsey" scheme.

Please scan this QR code
to submit feedback on the
proposed competition entry

