

Okra with Build Up, Hortus Collective & Op.x



Introduction

Home Grown proposes a framework for designing and making parks that supports local community involvement at all stages of the process, from designing and building to planting and growing. Our approach places particular focus on providing local young people with opportunities and skills training, through free activities and paid work placements, to help them shape the future of a park at the heart of their community.

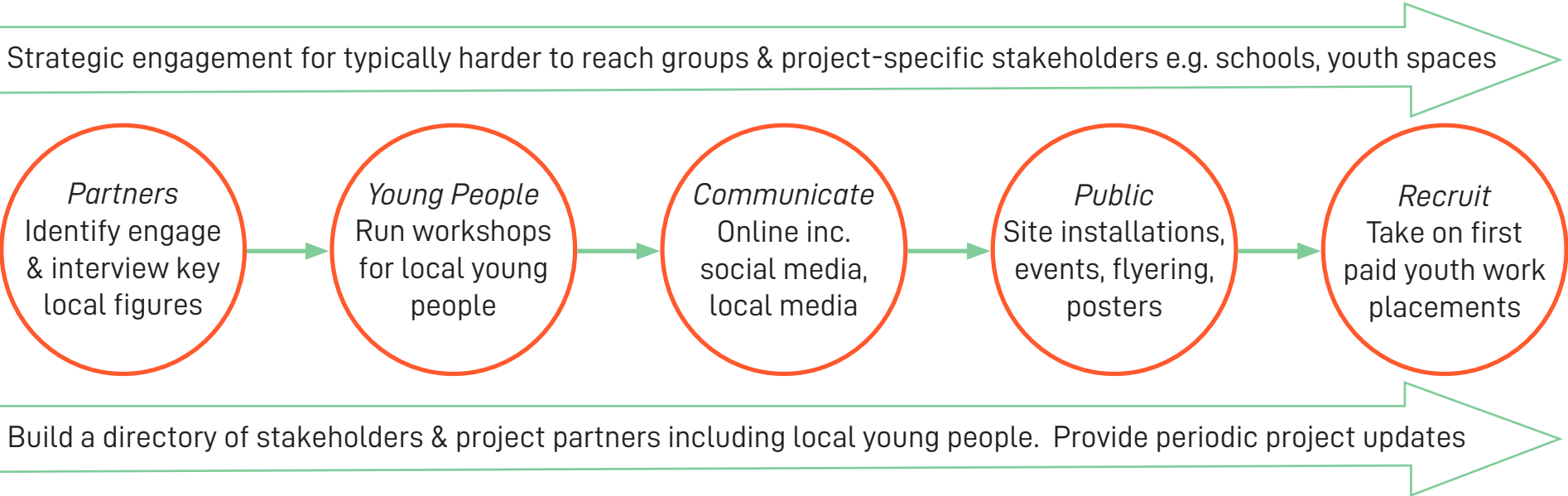
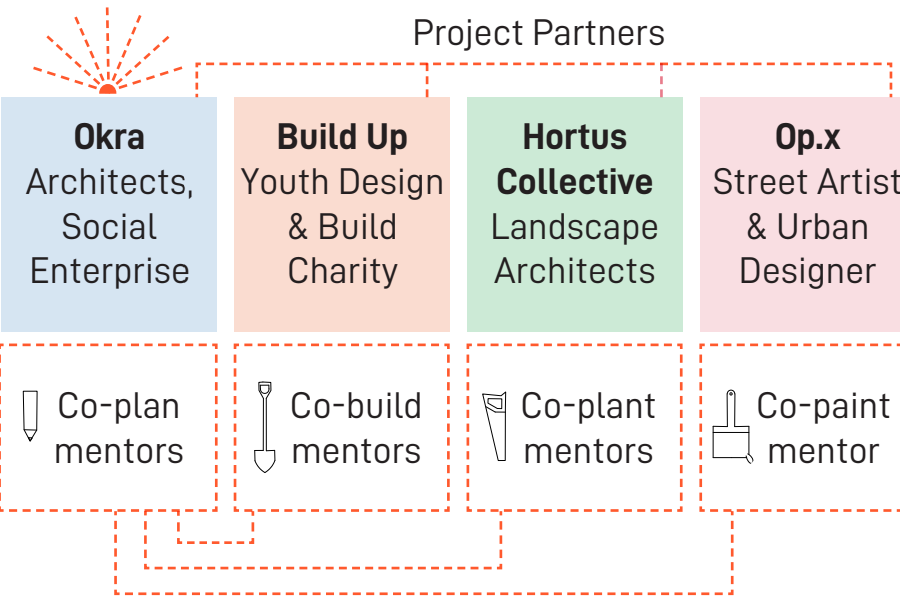
Our approach is underpinned by a sustained period of research and engagement, including programming activities at the park and workshops in the local area to get to know local stakeholders and ensure that the whole community, including young people, typically harder to reach groups and NEETs, are brought into the project.

Meet Your Partners...

We are a team of SMEs made up of architects, graphic designers, builders, urban designers, landscape architects and planting specialists. We have extensive experience in creative engagement, co-design with local communities and in producing exciting, natural and robust outcomes.

Project Lead, Okra, is a multidisciplinary design studio who host a local biannual, public event called Yard Life, providing the community free activities on the theme of manufacturing and the circular, local economy in the city. Build Up are a charity who specifically work with children, including those from under represented groups, to design and build their local environments. Hortus Collective are a landscape architecture practice with particular expertise in planting. Op.x is a street artist and urban designer who co-creates highly contextual art to enliven public spaces.

Project Director / Lead Contact



(Above, upper) Site analysis drawing showing local social infrastructure. Key youth infrastructure in orange
(Above, lower) Diagram showing our engagement strategy for the initial period of the project



(Upper left) Play equipment design and build workshop led by Build Up with young people
(Upper right) Structures student workshop led by Okra
(Lower left) Basketball court painting co-designed between Op.x and local residents of the D'Eynsford Estate
(Lower right) Students planting at Waterloo City Farm led by lead landscape designer Hortus Collective

Please scan this QR code to submit feedback on the proposed competition entry





Programme for Bramcote Park: 2022, 2023 & Onwards

We're proposing a programme of cultural activities, design workshops, building days, painting days, planting workshops and work placements for young people. The diagram below shows key points in the programme:

- 2022 Community Co-Design, Refresh & Test**
 - Jan - Community project noticeboard install
 - Jan - Recruit local young people for paid work placements in design + build
 - Feb - Community design events
 - Feb - Recruit young people for Easter holiday design + make workshops
 - Apr - Presentation to Old Kent Road Community
 - May - May half term holiday, young people's design + make workshops (basketball court design + paint)
 - May - May half term holiday, young people's design + build workshops (timber furniture)
 - Jun - Community basketball event
 - Jun - Community design consultation events
 - Jul - Summer holiday young people's build programme
 - Aug - Community celebration event
 - Oct - Half term young people's planting workshops
- 2023 Realisation: Young People & Local Suppliers**
 - 3 design + build events with young people
 - Community planting events
 - Corporate volunteer events
 - Celebratory event
- Onwards – Natural Custodianship, Support for Friends of the Park Group, Support for Properly Financed Community Maintenance**

TBC

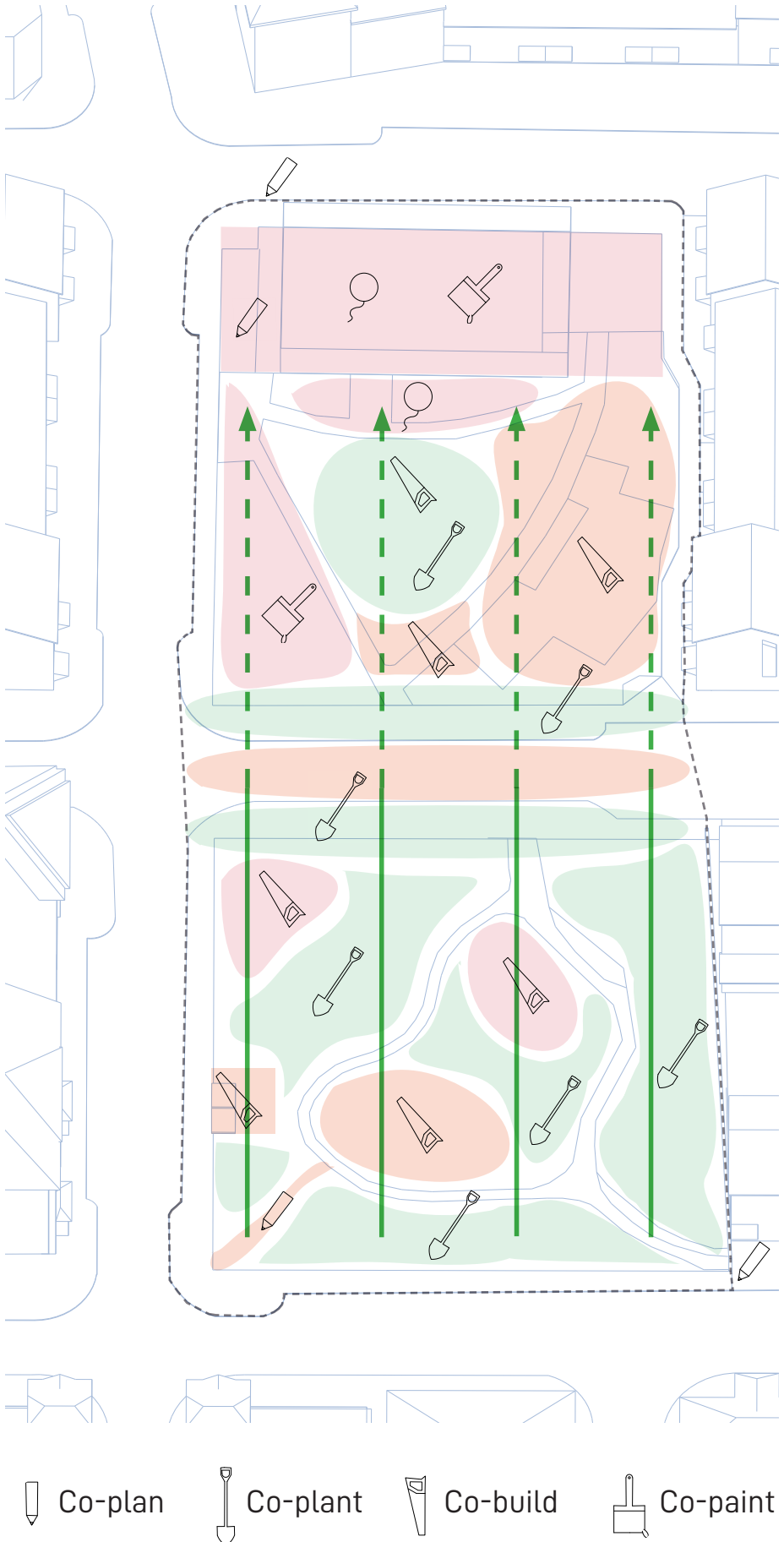
Creating Lasting Value

Our proposal creates a guiding framework (right), allowing the community to determine the outcomes for their park, shaped by meaningful forms of on-the-ground engagement and varied forms of collaborative design and making. Meanwhile, the programme (above) will generate jobs for young people, create opportunities for fun, provide skills in creative and practical fields and inform the future of the park. For example, we are proposing an early event to co-design and refresh the basketball court, which will be followed by a basketball event with local young people and a coach.

Placing young people at the heart of the project will help to support intergenerational respect and help make the community stronger. 3-month paid work placements in designing, building and growing will provide local skills training and work experience for local young people. Workshops will be highly visible and open, encouraging the public to get involved where they want to. The lasting effects of young people leading projects and having a stake in their environments is an increase in pride and reduction of anti-social behaviour.

We will also support infrastructural changes to help make the area more resilient to future climatic risks, such as flooding, improve air quality, biodiversity and make the area safer to use. For instance, we're proposing to connect the two sides of the park with SuDs and a robust grasscrete pedestrian surface (right), connecting the soft and hard sides of the park and change the priority of its function subtly: making drivers aware that they are driving through a park and creating a safer environment for pedestrians.

Construction and planting will be ambitious and creative, community-designed and work with the local, circular economic. It will be fit-for-purpose and designed to be robust within a maintenance plan that is reasonable to the context of the park. This will ensure that the legacy of the project remains strong for decades to come.



To make Bramcote Park a sustainable, local success story, we will:

- Celebrate the Local Community**
 - 1. Instill lasting pride and custodianship in local people, including young people
 - 2. Run many activities to strengthen community bonds
- Support the Local Economy**
 - 3. Provide 3-4 paid work placements for young people
 - 4. Prioritise local employment in construction contracts
- Improve Local Biodiversity & Natural Resilience**
 - 5. Use planting and construct SuDs to improve the parks appearance and opportunities for exciting play
 - 6. In turn increase biodiversity and environmental resilience by improving drainage and water attenuation

Please scan this QR code to submit feedback on the proposed competition entry

