

# Factories to Fields

LudwigWillis Architects

Jonathan Cook Landscape Architects  
Esther Calinawan & Poku-Davies Studio

## Celebrating the Industrial Heritage of Bramcote Park

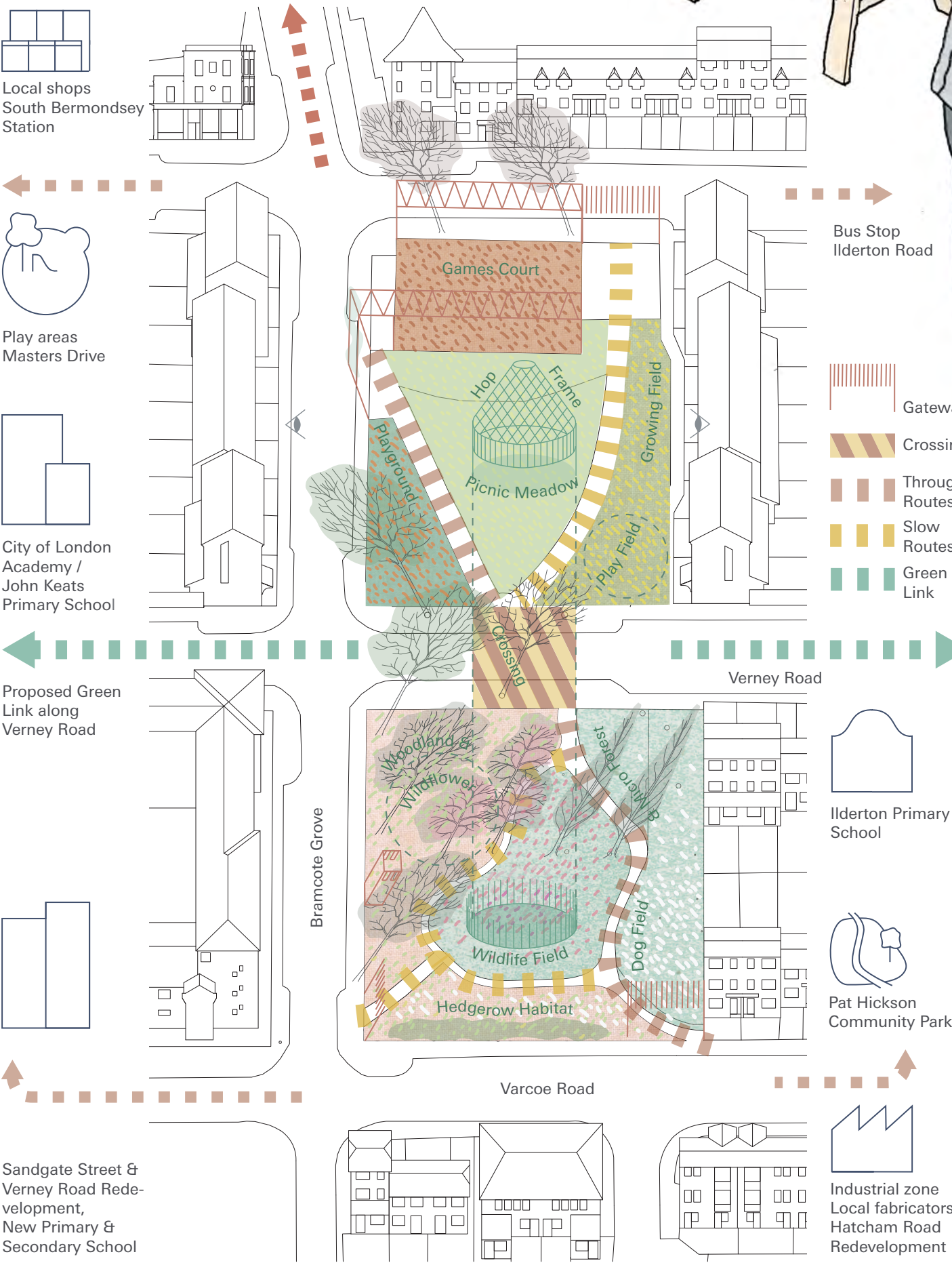
**From Factories**  
Bramcote Park was established during the upheavals of industrialisation to provide a much needed breathing space for the local community. South Bermondsey has been shaped by its industrial heritage including the Surrey Canal, the Gas Works and the Bricklayers Railway. As change and redevelopment comes once again to the Old Kent Road, we celebrate this history whilst re-establishing a green and uplifting oasis for the neighbourhood.

**To Fields**  
Through co-design we will start a dialogue to bring local residents, communities and schools together to create a patchwork of fields celebrating the diverse backgrounds and histories of the neighbourhood. The new fields will provide places to play, grow, relax and come together. The patchwork of fields accommodates diversity and difference within a unified and shared vision.

**Revive Bramcote Park**  
In the spirit of Ada Salter, Mayor of Bermondsey from 1922, who planted trees to foster healthy relationships and beauty on underused sites in the community, we see the potential to Revive Bramcote Park as a sustainable environment and biodiverse habitat that promotes health, happiness and well-being.



Conversation Model  
Engagement with local community and schools



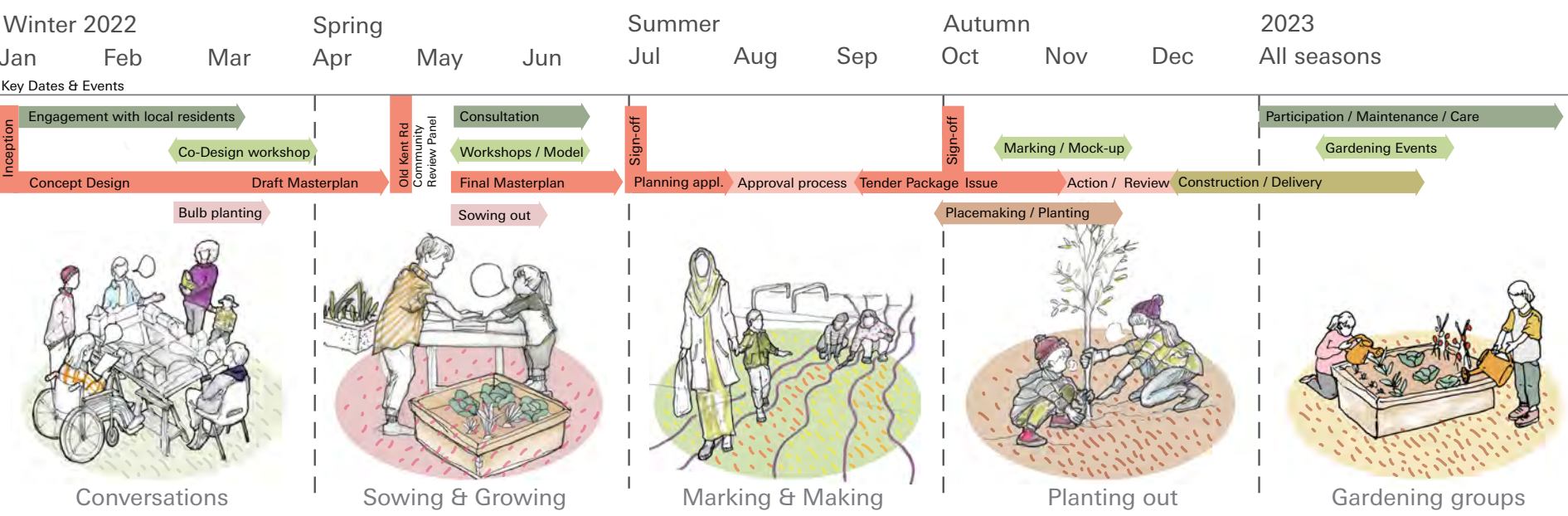
Our Design Team is experienced and passionate about improving the public realm by working with local communities. Ludwig Willis Architects and Jonathan Cook Landscape Architects are based in Southwark near the Old Kent Road. Esther Calinawan and Daniel Poku-Davies, who grew up locally and went to City of London Academy Southwark, are dedicated to youth and community engagement through design.



**Community Conversations**  
Through workshops with residents and local schools we will initiate conversations and bring people together to explore personal stories and histories about Bramcote Park. The narratives and stories of people and places are key to how we understand and engage community stakeholders in the design process and this dialogue will inspire and inform our approach to the park masterplan.



**Co-Design**  
Based on our community conversations we will make a working model of Bramcote Park to test design options and seek consensus for the proposals. We will take the model back to the workshop groups, in and around the park, to help us develop the masterplan based on the idea of a patchwork of fields. Through co-design we will establish the character and location of the fields.



**Planting & Implementation**  
Along with conversation and co-design we will begin to revive the park with hands-on planting workshops to encourage participation and galvanise local groups. Prior to the major re-landscaping works, community planting activities will provide visible improvements and contribute to a shared vision and sense of ownership.

Please scan this QR code to submit feedback on the proposed competition entry



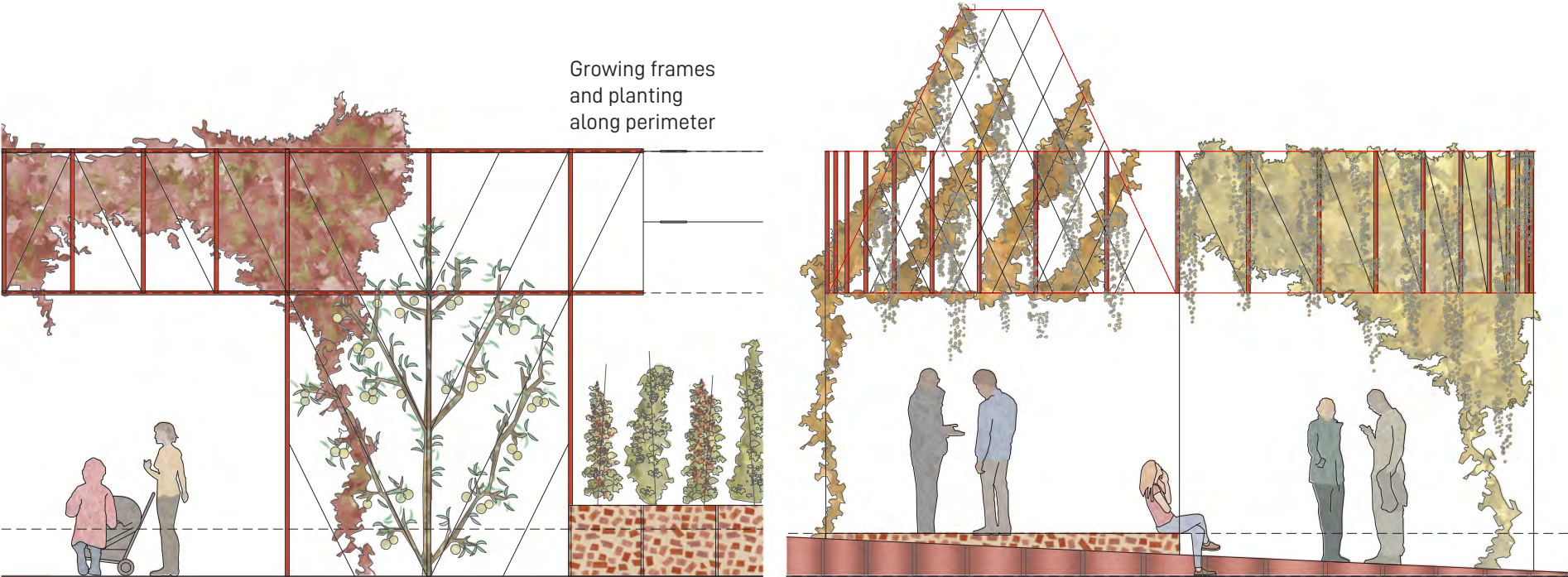


# Factories to Fields

Celebrating the Industrial Heritage of Bramcote Park

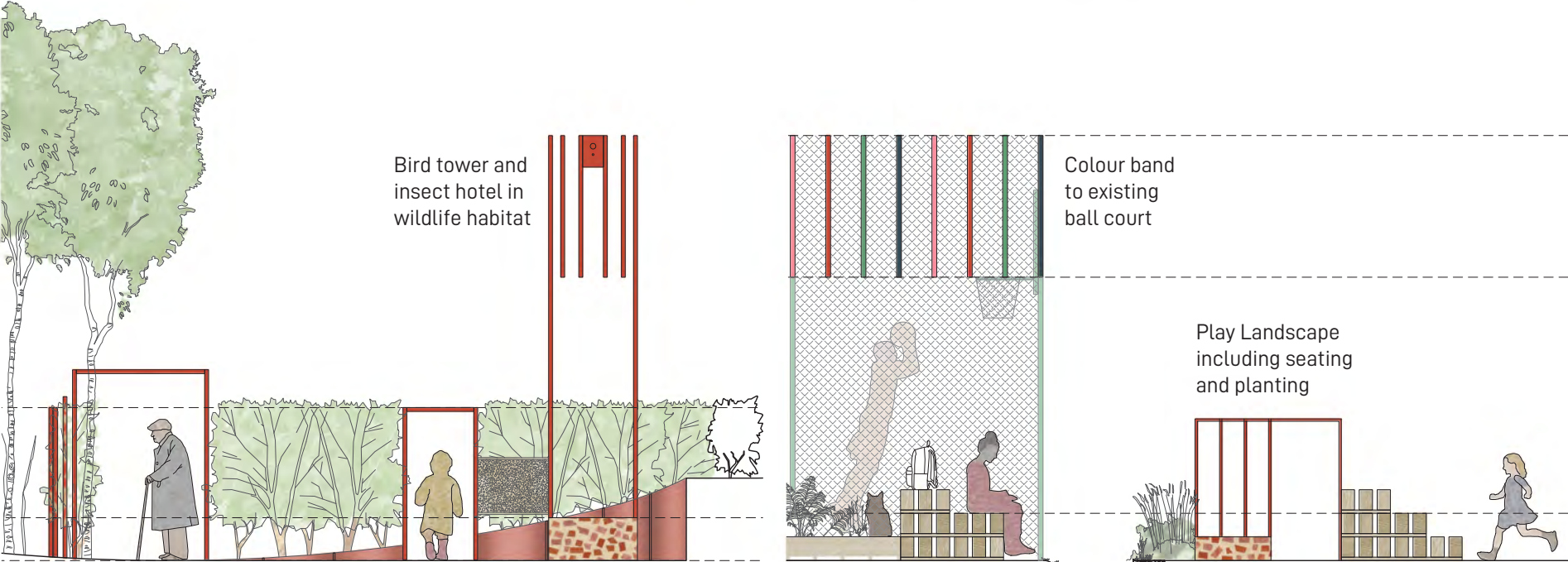
LudwigWillis Architects

Jonathan Cook Landscape Architects  
Esther Calinawan & Poku-Davies Studio



Growing Gateways for welcoming & wayfinding

Hop Frame for gathering & celebration



Chimney Glade for relaxing & well-being

Canal Timber Stacks for resting & play



Summer picnic

Autumn harvest



Spring blossoms

Winter woods



Hop harvest, Kent



Growing steel frames



South Metropolitan Gas Works



Reclaimed drum planters



Surrey Docks wharf



Playful timber benches



Surrey Canal and Old Kent Road



Recycled brick plinths

Reclaimed and robust materials refer back to the Surrey Canal and industrial heritage of the neighbourhood.



Honeysuckle



Hop Trellis



Martagon Lily



Espalier Apple Tree



Winter Cherry



Silver Birch



Ferns



Witch Hazel

Perennial Planting bringing changing colour and pattern to the park for a friendly inclusive atmosphere in all seasons.



Please scan this QR code to submit feedback on the proposed competition entry