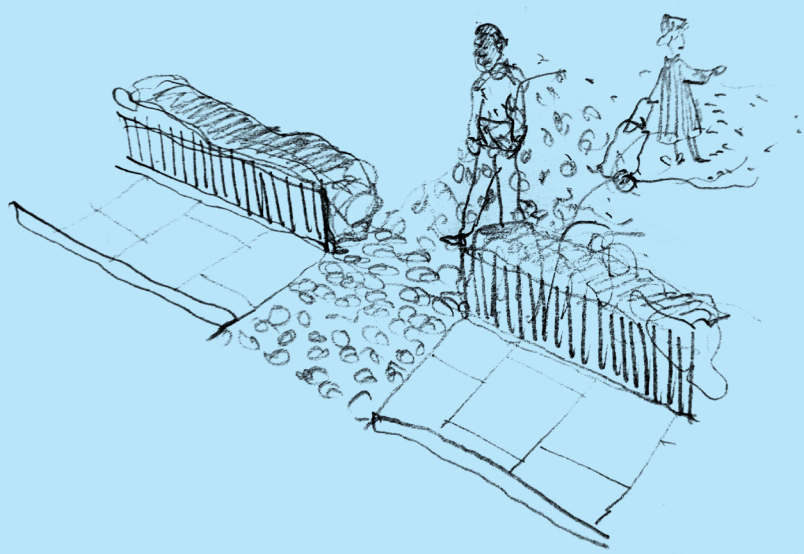


A little bit of care

Bamidele, Farouk & Livia with **SPACEHUB**

What makes a space a place?

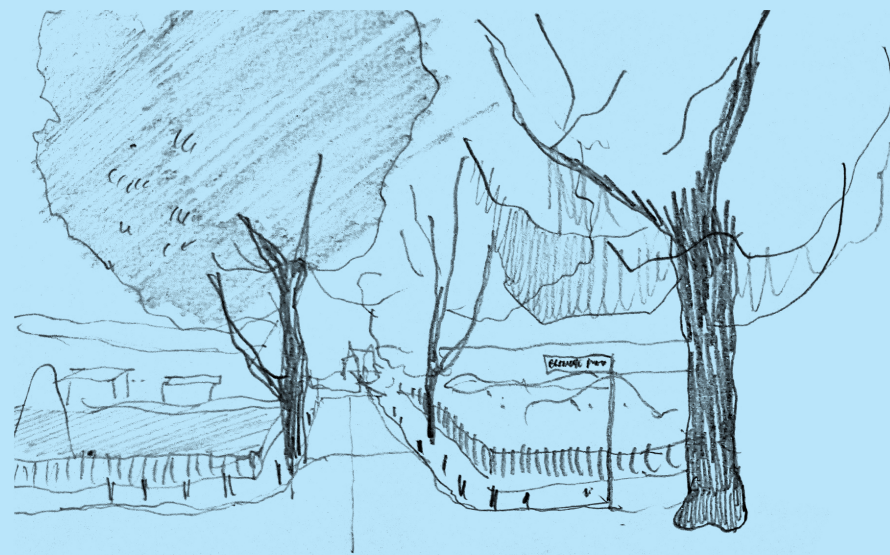
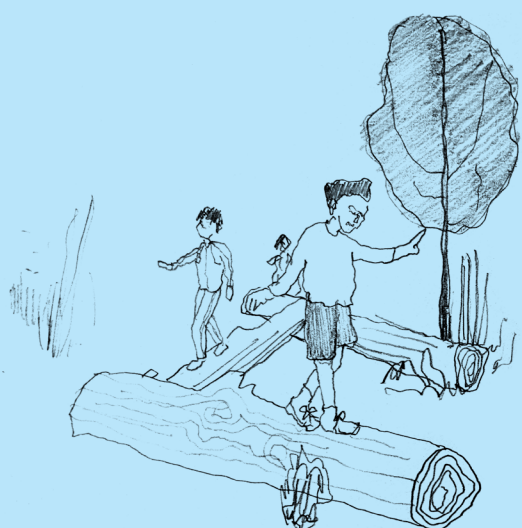


Opening up...

For us we see our parks and public spaces as a collection of rich and meaningful encounters. Encounters that bring different groups, ages, and experiences into one place that feed into the voice and identity of the local community. Often these spaces can exist as small instances and opportunities to bring people together in unique and varied ways. But sometimes we have to ask—can we make more of what we have?

Brampton Park has the potential to give space to a variety of moments to play, moments to be active, moments to sit and for times to relax. However, these parts of the park are segmented and separated from one another, making certain areas feel restrictive or inaccessible. So, what if we opened it up?

By looking at removing portions of fencing in certain areas and using planting to create 'softer' form of barriers, there's an opportunity to make the space feel more open and easier to access. In line with this we're keen to look at how we can use floor paving and graphics to clearer and stronger connection between the two sides of the park.



What's already there...

A pleasant walk, in the early morning? Joyful laughs? Children playing? The chance meeting of neighbours and old friends?

There are many elements in the park that already exist, but some just need a bit of care and to be celebrated. Rather than proposing to completely remove things, we want to take time to identify all the different pieces (such as bins, lampposts, swings, benches). We want to work out what can be retained, restored and improved upon.

In some cases this might be a fresh coat of paint or a new surface to play on. In others, it might involve moving things around or upcycling things to make it useful again. However, we know that sometimes things can't always be recycled and reused, and you simply need to introduce something new. And in these cases, we'd try to be careful and considered in our approach to use local makers and resources.



A space of our own...

We feel that a major part of this project is how the community can take ownership of the project. We really want to engage and work with the local residents and community to create a place that isn't just another park—but a place which is truly cared for and belongs to you.

With a wealth of different backgrounds, ages and experiences that are local to the park, opportunities to meet, discuss and consider ways of maintaining and caring for the park should be done collectively. By making sure that everyone can contribute and give input however big or small is an important in trying to create a space that is open to all.

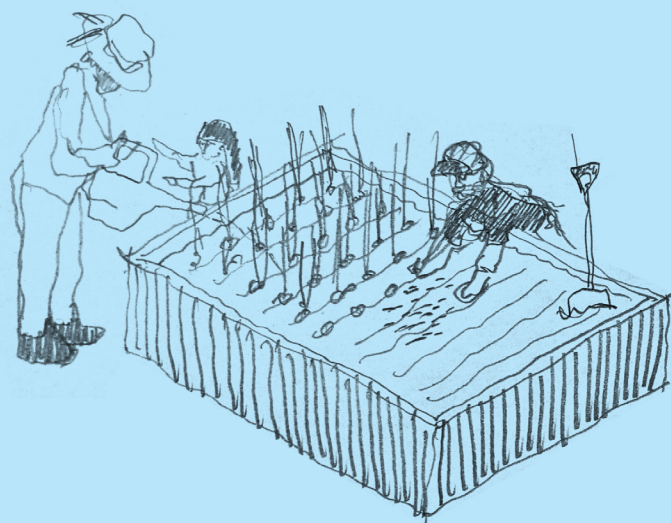
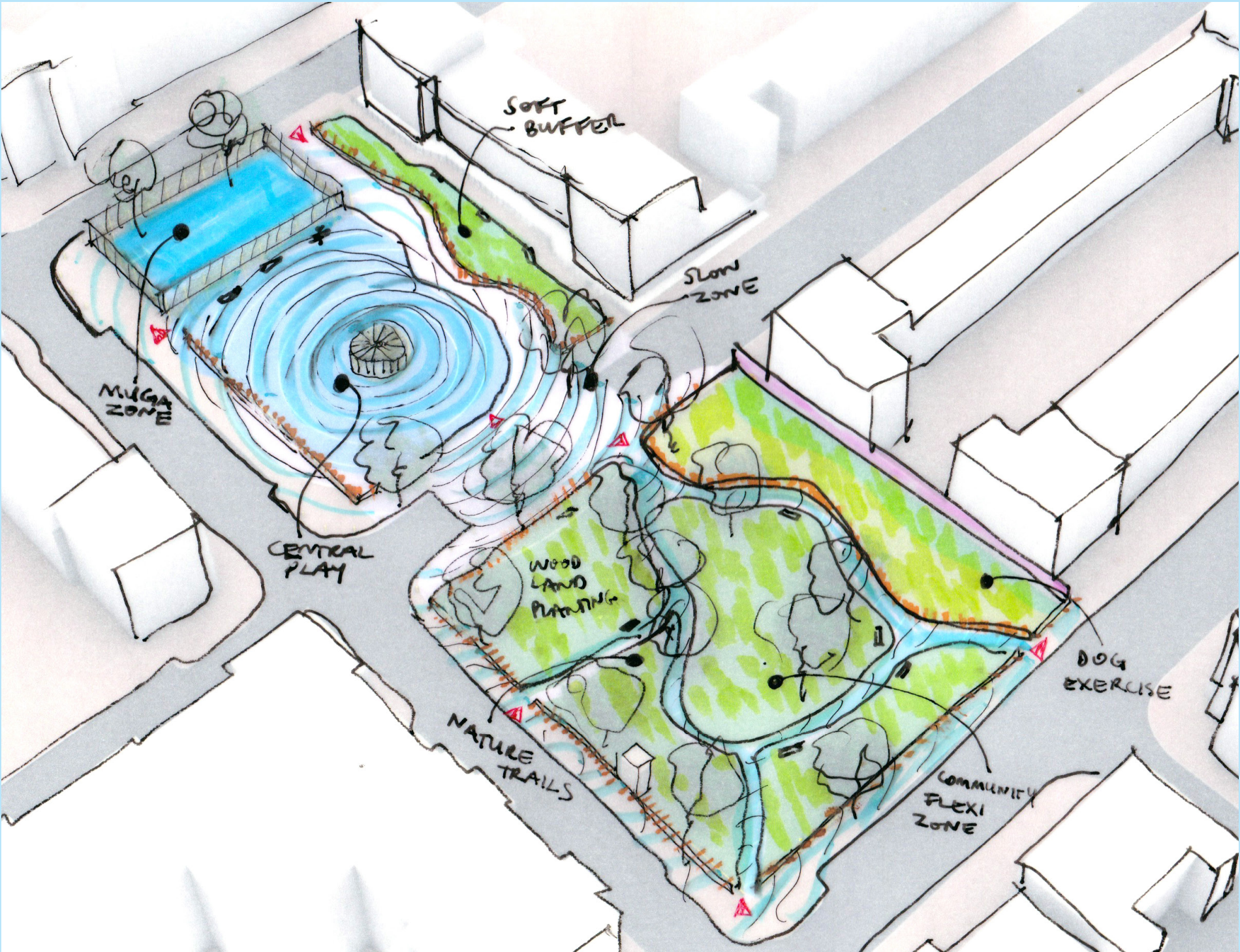
We propose that there be recurring workshops, community events and collective activities throughout the design process. Our hope is that as the project develops, these could go on to form a set of 'house rules' or ways of caring for the park, which could hopefully be maintained long after the park has been refreshed. As our cultural and green spaces can be few and far between, we hope that more spaces like this can grow and add another layer of richness, belonging, and care to our everyday lives.



A little bit of care

Bamidele, Farouk & Livia with **SPACEHUB**

What makes a space a place?



How can we engage?

Bramcote park should be a place where local residents can relax, play, enjoy nature and feel both safe and welcome.

Do you use, or want to make more use of the park?

As designers we love to work with communities, as we know that this gives the best outcomes. We want to bring your ideas to life! We will organise opportunities to meet and get to know residents, schools, local businesses and networks, so that you can have your say. Perhaps you love the park as it is, or maybe there is a particular area that worries you? The more people that get involved, the better the park will be.

We plan to work through three stages:

1. Getting to know you and the park: Look out for special postcards that will come through your letterbox and via email. We will also host some fun sessions around play, nature and community where you can share ideas in different ways and meet us.
2. We will take these ideas into co-design workshops, where we will work with anyone who wants to be more involved to draw up some proposals for what the park can be.
3. These ideas will then be sent out to the wider community to comment on, before final decisions are made.

Over the pandemic we've all learnt the value of having good quality outdoor space close to where we live. It's important that you all have a sense of ownership over Bramcote park and know that you have a say in improving it.

A bit about us...

Bamidele Awoyemi, Farouk Agoro & Livia Wang

We are a collective of designers and artists that live and work in South London, with a keen ambition to collaborate with different groups, specialists, and communities in the projects we do. Despite all still practicing and sharing backgrounds in architecture, much of our work has crossed into other disciplines of art, film, exhibition design, education, and curation. If given the opportunity, we hope we can work with you to create a rich and meaningful project.

SPACEHUB

Spacehub has grown modestly in recent years however our attitude remains that of a small and agile business that embraces opportunities to explore design thinking. We are always ready to interrupt the status quo and challenge assumptions. This is particularly so during the early stages of site planning where we look to create the right spaces in the right place to form successful and sustainable urban realms.

We are a group of individuals with a common sensibility aspiring to design with integrity and purpose to meet some of today's complex challenges.



Please scan this QR code to submit feedback on the proposed competition entry

